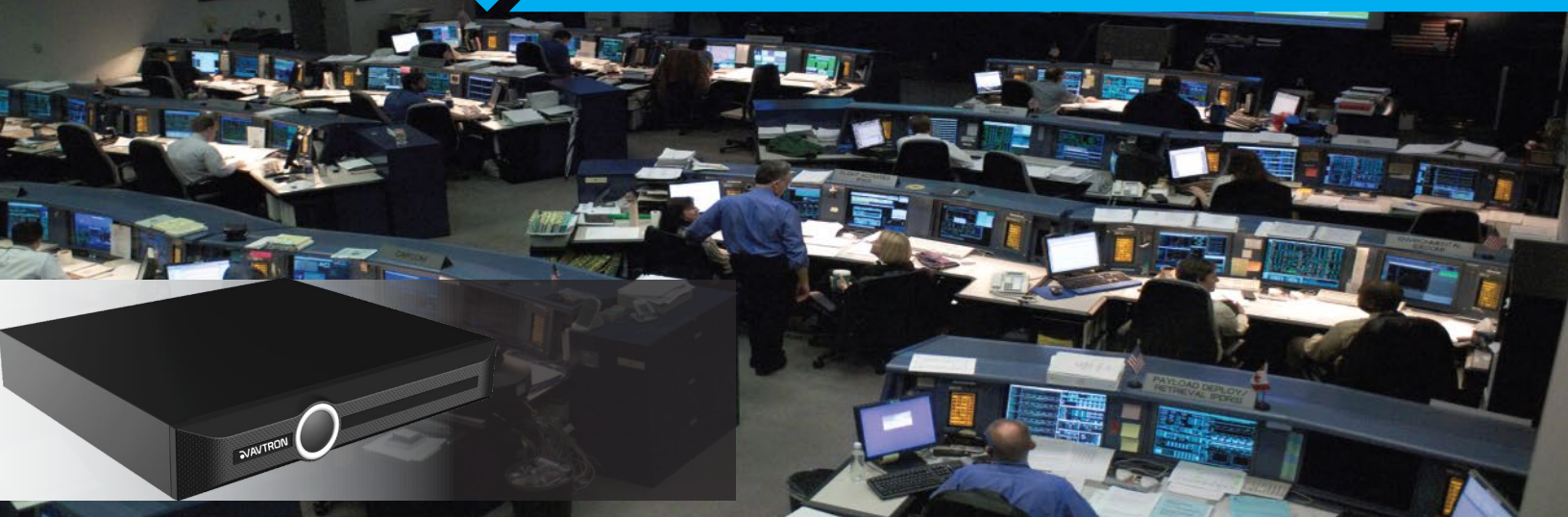




## RAID Intelligent NVR AM-i880-UHD 80Ch H.265+ 4K Intelligent RAID NVR



**Superior Engineering Design & Sensational Image Quality**

### AM-i880-UHD 80Ch H.265+ 4K Intelligent RAID NVR



H.265+ VIDEO  
COMPRESSION



ULTRA HD  
RESOLUTION



HDMI



VGA



RAID



VIDEO  
ANALYTICS



ANR



SMART RECORD  
& PLAYBACK



RJ45 LAN



HDD GROUPING  
& QUOTA



TRIGGER  
ALARM



P2P CLOUD

### Features :

- Latest H.265+ HEVC Hardware compression
- Supports 12MP/4K 8MP/6MP/5MP/4MP/3MP/1080P/720P/4CIF IP Camera Input
- Redundancy Supports by the RAID-0/1/5/10, JBOD, Stand By HOT SPARE N+1 Technology
- Array configuration available One key build, Manually rebuild and Rebuild automatically
- Supports 8HDD Port with extensive storage up to 80TB capacity
- Super High 620M bandwidth throughput
- Supports all 80Ch iVA Video Analysis(AVTRON iCRY Series)
- Video analysis processing of cameras such as Facial detection/Crowd/Loitering/People counting/Missing & Foreign object/Tripwire/Perimeter & many more
- Video Quality Diagnosis function like Electromagnetic interference, Fuzzy video, Noise, Video color cast
- ANR, Smart Record and Smart Search, Record file tag, Recording encryption
- Software & Hardware alarm linkage for various Analytics, Alarm & Diagnosis functions
- 64Ch real-time synchronous display on local HDMI screen
- 2x HDMI, 2x VGA Video outputs for Multiple screen display, HDMI Ports Programmable for each display
- HDMI resolution up to 4K & VGA resolution up to 1080P Real-time output
- 2x Giga LAN Port(RJ45) for Dual IP address, Aggregate redundancy & Load balance
- Advanced HDD Grouping & Quota functions with customized recoding setup & S.M.A.R.T HDD technology
- P2P secure cloud monitoring on iOS,IPAD,Android handsets, Alert management
- 256Ch CMS Software, Supports up to 150CH Viewing at single Screen others 100CH/80CH/64CH/49CH/36CH/25CH/16CH & many more
- ANR(automatic network replenishment) to Supports offline network storage data(SD Card/USB) videos automatically download to NVR hard drive when network re-established
- Network protocols TCP/UDP/FTP/SMTP/upnp/RTSP/RTP/HTTP & many more, Auto search with Avtron(iCRY series) camera
- Network & HDD fault triggers like Disk error, Network error, Conflict error and so-on
- Supports Email, FTP, Recording, PTZ, Tour, Alarm, Buzzer, Digital zooming on Live/Record/Playback
- Backup through USB Flash drive/HDD/CD&DVD-RW/eSATA Device/Network download
- Supports 1 eSATA for backup, USB3.0, Quick playback & back up, Customized GUI display
- Two-Way Audio Inter Communication Through (CMS,Mobile, NVR)
- Third party alarm integration by 16Ch alarm input & 4Ch output
- Latest ONVIF S profile compliance, 19" Rack mount

## Intelligent Video Analytic Functions :

### Double Trip Wire



The application detects moving objects that cross a two trip line, making it possible to automatically trigger an event. Ideal for illegal turn or traffic flow (vehicles or people) and specify the minimum to maximum time intervals or when the person or an object enters in unauthorized zone and crosses, the both virtual lines trigger an event.

### Facial Detection



The application is able to identify and capture human faces from live video & it can save the images to the specified Recording Path either in NVR or CMS or Local Computer with Date & Time Stamp. Ideal for ATM windows, Service and Ticket Counters, Retail POS counters, Doorways and Passageways, Lobby and Reception areas.

### People Counting



The application sense people from an overhead position in the desired areas, how many persons Enter & Exit passing through. Functional to maintain Visitor Data, supervise stock point, evaluate traffic in key areas & manage the traffic flows. Ideal for Customer Service Centers, Airports, Changing Rooms, Point-of-Sale (POS) transactions Desk.

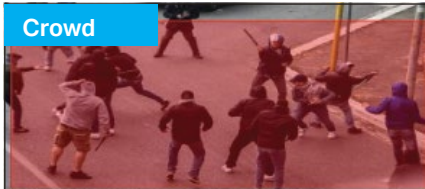
### Foreign Object



**Foreign:** The application Detects object abandoned/left behind/ Suspicious Objects Left in Pre-defined Area. It triggers an event. Ideal for Public Transports, Museums, Art Galleries & Public Places  
**Missing :** The application detects when a particular object was moved or removed from the desired drawn Virtual area, it trigger an event. deal for Museums, Warehouse, Art Gallery, Jewelry showroom.

### Missing Object

### Crowd



The application estimates the density of people in pre-defined area, once the density crosses a certain limits or suddenly group of a people enter into in the pre-defined area, it triggers an event. Ideal for Retailers, Shopping Malls, Waiting Areas, Hospitals, Parking Zones, Silent Zones.

### Loitering



If somebody enters the marked area and stays there for a certain period of time, the alarm is automatically triggered. Ideal for Public areas, Border Fences, Buildings, Government Restricted Zone, Banks, Parking Areas.

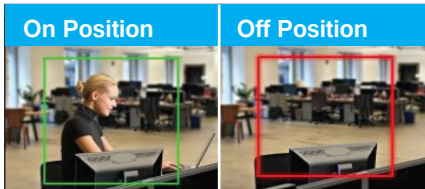
### Parking



The application detects illegal parking with pre-defined restricted zones, speed limit settings.

Ideal for VIP parking Zone, No Parking Zone, Special Allocated Parking Zone, Parliament House.

### On Position

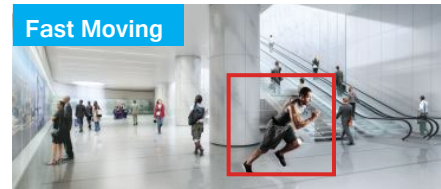


The application triggers an alarm when the Duty Officers are absence from their pre-defined sitting positions.

Ideal for Reception, Customer Service Desk, POS Desk, Entry/Exits Security Guards Cabin.

### Off Position

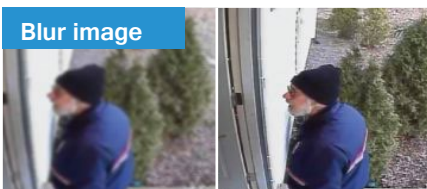
### Fast Moving



The application triggers an alarm when the person runs in a not allowing Running pre-defined Zone.

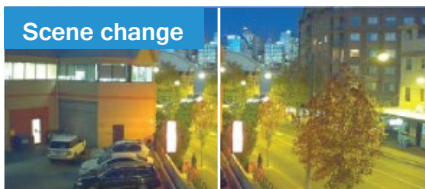
Ideal for Temple, Hallways lobbies, Platforms Walking Zone, Airports Runways.

### Blur image



The application trigger an alarm if someone deliberately or accidentally disturbed the lens focus or change the image Sharpness.

### Scene change



The application trigger an alarm if the camera Rotated/Manipulation/Direction Shifted from the user-selected Viewing direction or camera lens is covered by some bag or cloths, Spray Painting, Video Tamper.

More than  
**18 IVA Functions**  
are available

## Technical Specifications

Model No	AM-i880-UHD
<b>System</b>	
Video compression	H.265+/H.265/H.264HP/H.264MP/H.264BP
Audio compression	ADPCM/G.711A/G.711U
Operation system	Embedded Linux
Signal system	Auto detect
Bandwidth throughput	620Mbps(Incoming 320Mbps, Outgoing 320Mbps)
Remote connections	160Channels
<b>Record/Playback/Streaming</b>	
IPC input	80CH @ 4K/6MP/5MP/4MP/3MP/2MP/720P/4CIF
Live Screen window	64CH/40CH/36CH/25CH/20CH/16CH/10CH/9CH/8CH/6CH/4CH/1CH
Live Display channel	4CH@4K/6MP, 5CH@5MP, 8CH@4MP/3MP, 16CH@1080P, 32CH@720P, 64CH@4CIF Realtime Display
Record resolution	12MP/8MP/6MP/5MP/4MP/3MP/1080P/UXGA/720P/VGA/4CIF/DCIF/2CIF/CIF/QCIF
Record frame rate	Mainstream 25fps(P)/30fps(N), Sub stream 25fps(P)/30fps(N)
Record function	Smart Record, Records Encryption, Records TAG, One Key Start Recording, Trigger Recording
Smart record	Different recording bitrate at different time zone, i-Frame recording only record key frame to lower frame rate
Trigger record	Manual/Timing/Motion Detection/Port Alarm/ IVA Alarm/Video Occlusion
Playback channel	16CH @1080P/720P/D1, 8CH @4MP/3MP, 4CH @4K/6MP/5MP
Smart search	YES, Quickly search target iVA videos , Only for iCRYs series cameras
Playback function	Play, Pause, Stop, Rewind, Fast, Slow, Next & Previous File/Camera, Full screen, Repeat, Shuffle, Backup selection, Digital Zoom
Instant Access Function	Quick playback up to last 5min, Quick backup
Record quality	Best/Better/Good/Normal/Worst
Record stream Bitrate	VBR/CBR (32 ~ 16384Kb/s)
Sub stream	D1/CIF/QCIF, Frame rate selectable
Pre & Post alarm record	Pre : 10 ~ 600 sec, Post : 5 ~ 60sec
<b>Array &amp; Storage</b>	
Array method	RAID0, RAID1, RAID5, RAID10, JBOD(>0 , Each Raid Group Supports up to 100Mbps Input)
Raid management	Single click configuration, Restore automatically and Manually array rebuild
Redundant recording	200Mbps Input
Hot backup disk	Raid Hot Backup Disk and Overall
Hot standby	N + M
Hard disk interface	8 HDD (SATA Port)
Hard disk capacity	Max. up to 10TBEach Port
E-SATA interface	1 Port, NAS(NFS for Backup)
Management function	HDD Grouping and Quota, SMART HDD Check, Record file TAG, File lock
ANR	Download Stored Video Automatically from Camera SD Card, When NVR Online
<b>Intelligent Analytics Functions</b>	
Video analytics channel	1~2CH @ Any H.264 Onvif IP Camera(2MP)(Tripwire, Perimeter, Object Detection & Count) and
Video diagnosis	1Ch ~ 80Ch with iCRYs iVA Process Camera(Facial detection/Fast moving/ Missing & Foreign object/Crowd & Screaming detection /Tripwire/Perimeter/People counting/Loitering/Parking/Blurred image/Audio offline/Off-Position) Video color cast detection, Noise Detection, Electromagnetic interference testing, Fuzzy video Detection
Motion detection	Yes, Zones :396(22x18), Sensitivity Level 1~ 100
Video loss/blind alarm	Yes
Hdd alarm trigger	Disk Full, No Disk, Disk R/W Error, Redundancy Error
Network alarm trigger	illegal Access, IP Address Conflict, Network Lost, MAC Conflict
Icrys Series camera Function	Corridor Control, Plug & Play, Image Flip, one key control,
Event trigger out	E-MAIL, Snap, NVR Sound Buzzer, OSD, Alarm Server Devices, Video Recording, Alarm Out, PTZ Trigger
Alarm trigger	Local Alarm Port Out, NVR Sound Buzzer, OSD, Alarm Server Devices

## Technical Specifications

Model No.	AM-i880-UHD
<b>Video/Audio/Interface</b>	
HDMI output	2 X HDMI Port @ Resolution up to 3840×2160, 2560×1600, 1920x1080, 1280x720, 1280x800, 1366x768, 800x600, 1024x768, 1440x900 Adjustable Output, Self-detection
VGA output	2 X VGA Port @ Resolution up to 1920x1080, 1280x720, 1280x800, 1366x768, 800x600, 1024x768, 1440x900 Adjustable Output, Self-detection
Network	2 X RJ45 Port - 10/100/1000MBPS Auto Detection(Load Balance, Redundant, Dual IP)
Audio	1Ch Input, 3.5mm Jack( Intercom), 1Ch Output
Alarm	16Ch Inputs, 4Ch Outputs, 3P Connector, 0V Signal
Communication protocol	2x RS485, 1x RS232
USB	3 Port (1 X USB 3.0, 2 X USB2.0)
Network protocol	TCP/UDP/MULTICAST/UPNP/HTTP/DHCP/PPPoE/DDNS/NTP/ HTTPS/NFS/FTP/RTSP/SMTP/HTTPS/SADP, Alarm Server, Auto Search iCRYSTAL Series IP Camera
Backup	eSATA Device/Flash drive/USB HDD/ USB CD&DVD-RW/Network download
Snap shot	Schedule, Link with FTP or Email
OSD setup	Channel Wise Color/Position/Transparency/Text/Masking/Date & Time Format
Usage display	Remaining Bandwidth Display, Flow Monitor, Capture Package
Log generation	Channel, Event based, Date and Time selection, Export
<b>Software Supports</b>	
Onvif compliant	Yes, Profile S/T
Key function	One key record, One key intercom, Digital zooming
P2P cloud	I-Phone, IPAD, Android, Record, Playback, Push Notification, Device controls
Web browser	IE, Safari, Chrome, Edge
Other functions	E-MAIL Alert, FTP Upload
<b>General</b>	
Language	English, Spanish, French, German, Chinese & Many More
Power supply	SMPS 100 ~ 240VAC, 50 ~ 60Hz
Power consumption	<80W without HDD
Operation conditions	-10°C ~ +55 °C (+14 F~ + 131 F), 10% ~ 90% RH
Enclosure	2U 19" Rack mount, Black color, Metal case
Weight (g) & Dimension	<10Kg, 440(D) x 458(W) x 89mm(H)

### Dimension :

