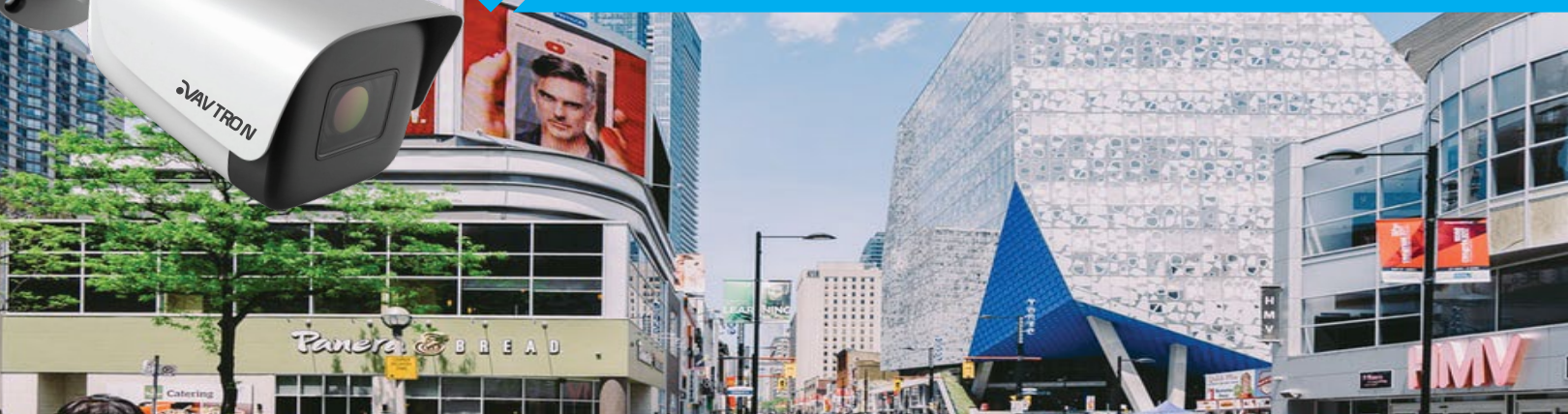




## IP Camera AM-SM5060-MMR5 H.265+ UltraHD 5MP Motorized IP Bullet Camera



**DARK WARRIOR**  
STAR LIGHT

### Dark Warrior Starlight Series IP Camera

Designed to work under Ultra Low Light illumination to Give Colour Picture Quality

Superior Engineering Design & Sensational Image Quality

## AM-SM5060-MMR5 H.265+ UltraHD 5MP Motorized IP Bullet Camera



VIDEO  
ANALYTICS



H.265+ VIDEO  
COMPRESSION



SUPER  
WDR



REGION  
OF  
INTEREST



12VDC/  
PoE 802.af



AUDIO  
IN/OUT



VOLTAGE  
PROTECTION



Local  
Storage



ALARM  
IN/OUT

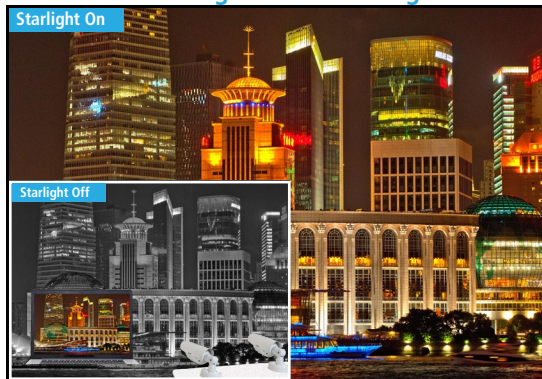


IP67  
Waterproof

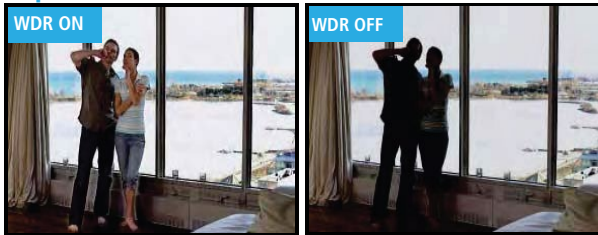
### Features :

- Ultra HD 5.0MP Resolution with effective 2592 x 1944P at 25FPS, Real-time 30/25fps at 4.0MP, 3.0MP, 2.0MP, etc.
- 1/2.8" Ultra low lux progressive scan CMOS sensor
- Latest H.265+ HEVC hardware compression along with H.264/MJPEG
- Ultra low lux color image at Color: 0.001Lux@ (F1.6, ACG ON), B/W: 0Lux with IR
- Motorized 2.7 ~ 13.5MM auto focus & Iris varifocal lens, Controlled remotely through IE/CMS/NVR
- Smart video analytics 18 IVA functions includes Face detection, People counting, Tripwire & Perimeter
- Supports P2P APP alert management & functions
- Supports 120dB WDR and 3DNR to night vision image enhancement
- Triple streaming, Triple compression, Variable/Constant bitrate and frame rate
- Supports offline storage by microSD card 512gb(card optional) and Network storage(FTP)
- ANR(automatic network replenishment) to support offline network storage data(SD Card/USB) videos automatically download to NVR hard drive when networkre-established
- ROI(region of interest) technology can save more than 25% of bit rate so it increases the storage period
- High intensity ExIR LED up to 80Mtrs. night vision, TDN by dual filter(ICR)
- Smart IR function works when object/person is close to camera. It controls IR to get clear picture
- 1Ch audio input,output, Third party alarm Integration by 2Ch Input /1Ch Output
- Software compatibility with icrys series 256Ch CMS software and any third party Onvif VMS/CMS Software
- P2P secure cloud monitoring on iOS/Android handsets(through NVR live/playback/audio and control)
- Built in uni/multicast streaming to support multiple user logging at same time
- Wide range network protocol TCP/UDP/QoS/FTP/SMTP/upnp/RTSP/RTP/HTTP & many more
- Various functions such as as WDR, Day&Night, BLC/HLC, AGC, White balance, Shutter speed, In/Outdoor, etc.
- OSD in multiple color, naming & position, Privacy, Motion detection
- Latest ONVIF S profile compliance, Email notification, Manual & Schedule snapshot
- Easy, fast response & friendly graphical user interface, Advanced encryption secure access
- Redundant power supported by 12VDC & PoE(power over ethernet) with 802.3af standard
- Built-in TVS up to 6000V and Lightning/Surge protection power(2KV) and RJ45(1KV)
- Weatherproof IP67 supported enclosure, Wall/Ceiling mountable, included 3 Axis bracket

### Darkwarrior Starlight IP Camera Night Vision



## Super WDR



## Remote Focus Motorized Control Lens



Remote Auto Focus Controlling Motorized lens technology and auto sets the focus & iris position for better picture quality in all focusing points and conditions.

## Intelligent Video Analytic Functions :

### Double Trip Wire



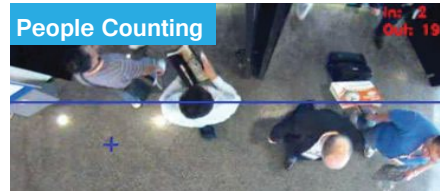
The application detects moving objects that cross a two trip line, making it possible to automatically trigger an event. Ideal for illegal turn or traffic flow (vehicles or people) and specify the minimum to maximum time intervals or when the person or an object enters in unauthorized zone and crosses, the both virtual lines trigger an event.

### Facial Detection



The application is able to identify and capture human faces from live video & it can save the images to the specified Recording Path either in NVR or CMS or Local Computer with Date & Time Stamp. Ideal for ATM windows, Service and Ticket Counters, Retail POS counters, Doorways and Passageways, Lobby and Reception areas.

### People Counting



The application sense people from an overhead position in the desired areas, how many persons Enter & Exit passing through. Functional to maintain Visitor Data, supervise stock point, evaluate traffic in key areas & manage the traffic flows. Ideal for Customer Service Centers, Airports, Changing Rooms, Point-of-Sale (POS) transactions Desk.

### Foreign Object



### Missing Object



**Foreign:** The application Detects object abandoned/left behind/ Suspicious Objects Left in Pre-defined Area. It triggers an event. Ideal for Public Transports, Museums, Art Galleries & Public Places  
**Missing:** The application detects when a particular object was moved or removed from the desired drawn Virtual area, it trigger an event. Ideal for Museums, Warehouse, Art Gallery, Jewelry showroom.

### Crowd



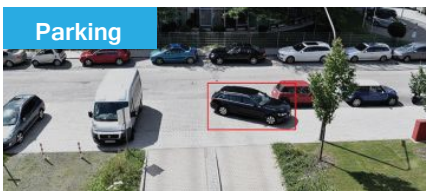
The application estimates the density of people in pre-defined area, once the density crosses a certain limits or suddenly group of a people enter into in the pre-defined area, it triggers an event. Ideal for Retailers, Shopping Malls, Waiting Areas, Hospitals, Parking Zones, Silent Zones.

### Loitering



If somebody enters the marked area and stays there for a certain period of time, the alarm is automatically triggered. Ideal for Public areas, Border Fences, Buildings, Government Restricted Zone, Banks, Parking Areas.

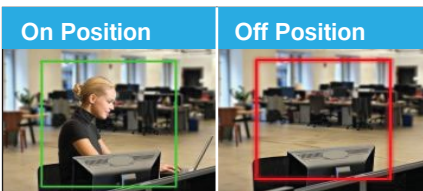
### Parking



The application detects illegal parking with pre-defined restricted zones, speed limit settings.

Ideal for VIP parking Zone, No Parking Zone, Special Allocated Parking Zone, Parliament House.

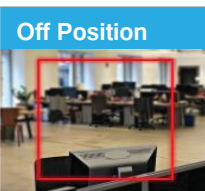
### On Position



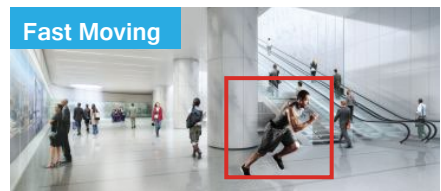
The application triggers an alarm when the Duty Officers are absence from their pre-defined sitting positions.

Ideal for Reception, Customer Service Desk, POS Desk, Entry/Exits Security Guards Cabin.

### Off Position



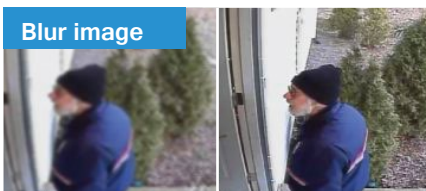
### Fast Moving



The application triggers an alarm when the person runs in a not allowing Running pre-defined Zone.

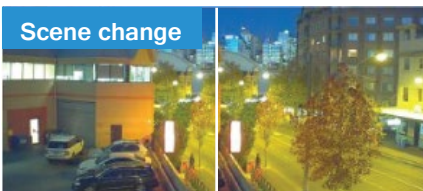
Ideal for Temple, Hallways lobbies, Platforms Walking Zone, Airports Runways.

### Blur image



The application trigger an alarm if someone deliberately or accidentally disturbed the lens focus or change the image Sharpness.

### Scene change



The application trigger an alarm if the camera Rotated/Manipulation/Direction Shifted from the user-selected Viewing direction or camera lens is covered by some bag or cloths, Spray Painting, Video Tamper.

More than  
**18 IVA Functions**  
are available



## Technical Specifications

Model No	AM-SM5060-MMR5
<b>Camera Specification</b>	
Sensor type	1/2.8" Ultra low lux Exmor CMOS sensor
Lux Level(illumination)	Color: 0.001Lux@ (F1.6, ACG ON), B/W: 0Lux with IR
Shutter speed control	Auto/Manual, 1s ~ 1/100,000s
Gain control(AGC)	Yes
Lens	2.7 ~ 13.5MM motorized lens
Focus control	Auto focus, One-key, Manual
ICR	Dual filter ICR
IR distance	up to 80mtrs., Smart IR control, IR LED power adjustable
<b>On Screen Display</b>	
WDR	120dB, Auto/Manual adjustable
Day/Night	Auto(Outside/Inside), Color, B/W
Digital noise reduction	3DNR (Close/Ordinary/Expert)
Light compensation	BLC Off/On, 1 Area, Customize design, HLC Off/On adjustable
White balance	Auto/Manual/Lock/Nature/Sunshine/Day Light/Warm Light
Other functions	Smart Defog control, EIS(Image Stabilizer), Flip control, Privacy masking
Motion detection	Yes
Image control	Brightness, Contrast, Sharpness, Saturation
OSD display	16×16,32×32,24×24,48×48,64×64 character size 8 area arrangement @ Time/Date/Week/Character/PTZ angle
<b>Compression/Video/Audio</b>	
Video compression	H.265+, H.265, H.264, MJPEG, H.264 Main/High/Baseline profile
Video resolution	5MP(1944P,1920P), 4MP(1520P)/3MP/2MP/1.3MP/1MP/D1/2CIF/CIF/VGA
Main stream	5MP 2592×1944, 2560×1920, 4MP(2560x1520)/1080P(1920x1080)/960P(1280x960)/720P(1280x720)/D1 (704x576)
Second stream	D1(704*576)/2CIF(704x288)/CIF(352x288)/QCIF(172x144)
Third stream	CIF(352x288)/QCIF(172x144)
Record & Live frame rate	Selectable 18 & 20fps at 5MP, 25fps at 4MP/3MP/2MP/1.3MP/1MP, second stream
Bit Rate	32Kbps ~ 16Mbps, VBR/CBR, I-Frame interval
Audio compression & bitrate	G.711/G.726/ADPCM & 8K~48Kbps
<b>Video Analysis</b>	
Intelligent video analysis	Tripwire, Double Tripwire, Perimeter, Object Abandon, Object Lost, Loitering, Running, Parking, Crowd, People Counting, On Duty Detection, Video Abnormal, Audio Abnormal, Heatmap, Face Capture(Face Detection), Safety Helmet Detection, Human/Vehicle Classification
Intelligent alarm	Motion detection/Video loss/Video blind/Port alarm/IP & MAC conflict detection
Alarm & IVA trigger	On-screen alerts/PTZ trigger/Link out/E-MAIL/FTP upload/Pre-Post record
Corridor control	Yes(supported format 16:9, 9:16)
Region of Interest(ROI)	8 Area
Advanced warning	Camera send early warning alert
<b>Software Support</b>	
Onvif	Yes, Profile S
CMS software	iCRYS Series, up to 256CH(IP+NVR+Matrix)
3rd Party VMS/NVR /CMS	Onvif/SDK/CGI
Mobile	Android /iOS through NVR, P2P cloud support
User login	8 User / 4 level of rights, Simultaneous login <7 User client
Snap shots	Schedule, Link with FTP or Email
Encryption	Off/AES

## Technical Specifications

Model No.	AM-SM5060-MMR5
<b>Network, Storage, Interface</b>	
Protocol	TCP/IP, ICMP, HTTP, HTTPS, DHCP, DNS, DDNS, RTP, RTSP, RTCP, PPPoE, MULTICAST, UPnP, FTP, IPV4, NTP, SMTP, IGMP, 802.1x, QoS, IPV6, ARP, UDP, SNMP, SSL, SIP, Telnet, SNTP, RTMP, SFTP, NFS
Pre & Post recording	Pre : 5 to 15sec, Post : 10 to 60 sec
Storage function	ANR(auto download in NVR), Manual & Alarm recording
Network storage	FTP(pre & post upload)
LAN port	1x Port RJ-45, 10M/100M ethernet
Storage	Micro SD/SDHC/SDXC slot(512Gb)
Audio	1Ch in, 1Ch out
Alarm	2Ch in, 1Ch out
Other ports	RS-485
<b>General</b>	
Power supply	DC 12V & PoE (802.3af)
Power consumption	<5W @ IR Off, <10W @ IR On, ICR switching @ 12W
Voltage protection	TVS 6000V, Lightning/Surge 2000V(power) 1000V(RJ45)
Language	English, Spanish, Korean, Italian, Turkish, Thai, Russian, Polish, French
Reset switch	Yes
IP & Vandal protection	IP67, IK10 graded enclosure(excluding glass)
Operating temp. & humidity	-35°C ~ 65°C & 0% ~ 95% RH
Enclosure	Metal housing, Built-in 3 axis bracket
Weight (g) & Dimension	<1.5Kg camera, 264.3mm(L) X 95mm(W) X 83.2mm(H)

### Dimension :

