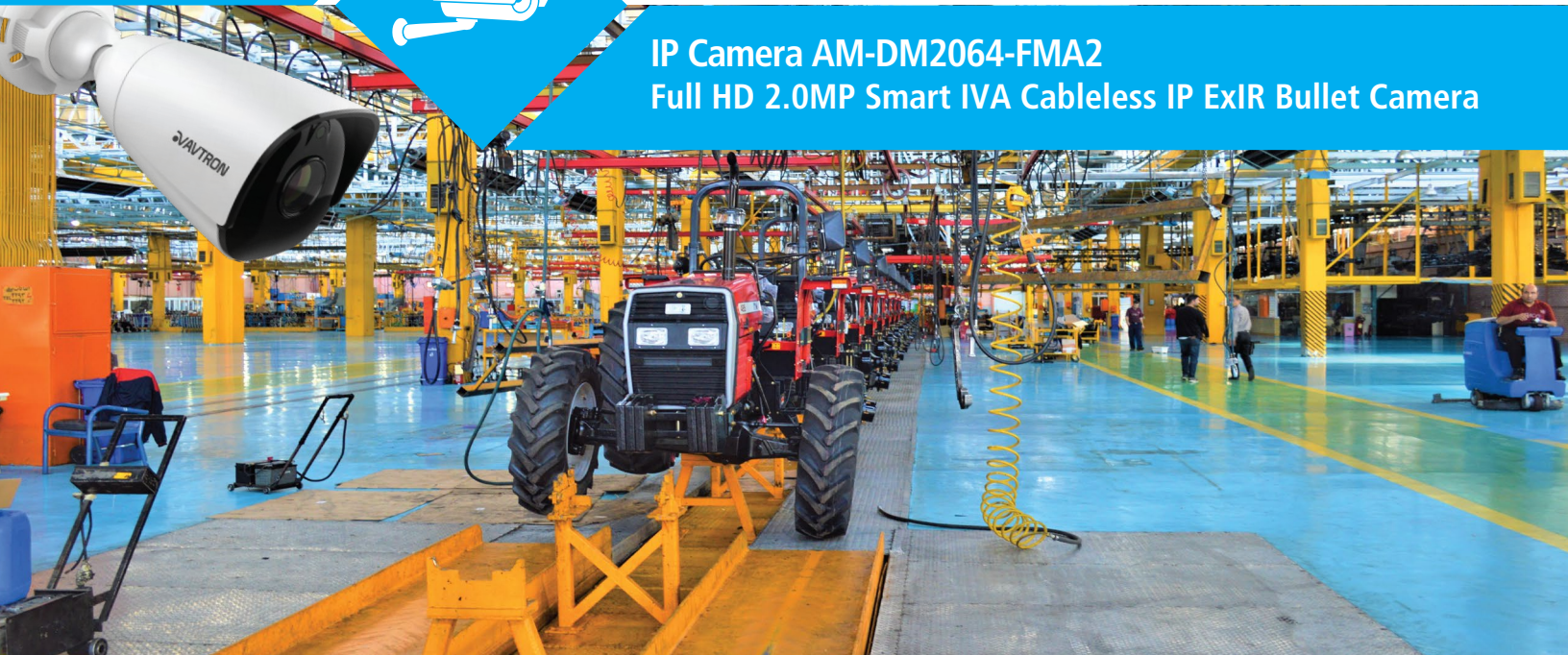




IP Camera AM-DM2064-FMA2 Full HD 2.0MP Smart IVA Cableless IP ExIR Bullet Camera



Superior Engineering Design & Sensational Image Quality

AM-DM2064-FMA2 Full HD 2.0MP Smart IVA Cableless IP ExIR Bullet Camera



SUPER WDR



H.265 + VIDEO COMPRESSION



VIDEO ANALYTICS



REGION OF INTEREST



SMART IR



MECH. IR CUT FILTER



MOTION DETECTION



LOCAL STORAGE 64GB



12VDC PoE 802.af

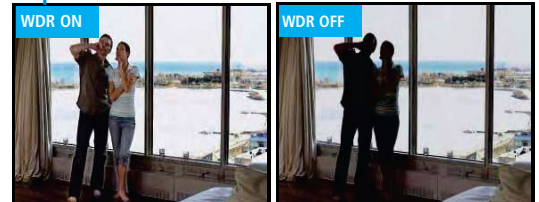


SURGE PROTECTION 6KV/2KV ELECTRIC PROTECTION

Features :

- 1/2.7" Progressive Scan CMOS Image Sensor
- Powerful H.265+ Hardware compression along With H.264, MJPEG
- Full HD 2MP resolution with effective 1920(h) x 1080(v) pixel at 25/30fps
- Smart IVA functions, Supports 120dB WDR and 3DNR to night vision image enhancement
- Triple streaming, Triple compression, Variable/Constant bitrate and frame rate
- Supports offline storage by microSD card 128gb(card optional) and Network storage(FTP)
- ANR(automatic network replenishment) to support offline network storage data(SD Card/USB) videos automatically download to NVR hard drive when network re-established
- ROI(region of interest) technology can save more than 25% of bit rate so it increases the storage period
- Wide viewing 89°angle by 4.0MM high definition fixed lens
- High intensity ExIR LED up to 50Mtrs. night vision, TDN by dual filter(ICR)
- Low illumination at Color 0.05Lux, B&W 0.01Lux and 0Lux at IR On
- Smart IR function works when object/person is close to camera. It controls IR to get clear picture
- Software compatibility with icrys series 256Ch CMS software and any third party Onvif VMS/CMS Software
- P2P secure cloud monitoring on iOS/Android handsets(through NVR live/playback/audio and control)
- Built in uni/multicast streaming to support multiple user logging at same time
- Wide range network protocol TCP/UDP/FTP/SNMP/uPNP/RTSP/HTTP & many more
- Various functions such as WDR, Day&Night, BLC/HLC, AGC, White balance, Shutter speed, In/Outdoor, etc.
- OSD in multiple color, naming & position, Privacy, Motion detection
- Latest ONVIF S profile compliance, Email notification, Manual & Schedule snapshot
- Easy, fast response & friendly graphical user interface, Advanced encryption secure access
- Redundant power supported by 12VDC & PoE(power over ethernet) with 802.3af standard
- Built in TVS protection 4000V & lightning/surge Power(2000V), RJ45(1000V)
- Waterproof IP67 housing that supports wall/ceiling mounts included 3 Axis Bracket

Super WDR



Intelligent Video Analytics :

Virtual Fence



With a virtual fence set alongside a railway track, freeway hard shoulder, building perimeter or around a temporarily parked asset for example, an alert is generated when that fence is breached. Since the system "understands" direction, alarm discrimination based on direction of approach is made possible.

Double Trip Wire



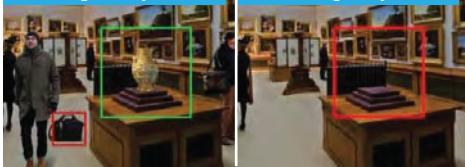
The application detects moving objects that cross a two trip line, making it possible to automatically trigger an event. Ideal for illegal turn or traffic flow (vehicles or people) and specify the minimum to maximum time intervals or when the person or an object enters in unauthorized zone and crosses, the both virtual lines trigger an event.

Perimeter



The application detect direction of movement can be defined in any direction of the zone movement or moving into zone or moving out to zone. Ideal for Security Zone, Restricted area, Valuable item Storage Area & Many More.

Foreign Object



Foreign: The application Detects object abandoned/left behind/ Suspicious Objects Left in Pre-defined Area. It triggers an event. Ideal for Public Transports, Museums, Art Galleries & Public Places
Missing : The application detects when a particular object was moved or removed from the desired drawn Virtual area, it trigger an event. Ideal for Museums, Warehouse, Art Gallery, Jewelry showroom.

Missing Object

Crowd



The application estimates the density of people in pre-defined area, once the density crosses a certain limits or suddenly group of a people enter into in the pre-defined area, it triggers an event. Ideal for Retailers, Shopping Malls, Waiting Areas, Hospitals, Parking Zones, Silent Zones.

Loitering



If somebody enters the marked area and stays there for a certain period of time, the alarm is automatically triggered. Ideal for Public areas, Border Fences, Buildings, Government Restricted Zone, Banks, Parking Areas.

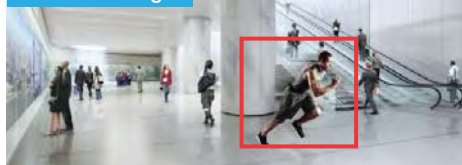
Parking



The application detects illegal parking with pre-defined restricted zones, speed limit settings.

Ideal for VIP parking Zone, No Parking Zone, Special Allocated Parking Zone, Parliament House.

Fast Moving



The application triggers an alarm when the person runs in a not allowing Running pre-defined Zone.

Ideal for Temple, Hallways lobbies, Platforms Walking Zone, Airports Runways.

Scene change



The application trigger an alarm if the camera Rotated/ Manipulation / Direction Shifted from the user-selected Viewing direction or camera lens is covered by some bag or cloths, Spray Painting, Video Tamper.

More than **10 IVA Functions** are available

Technical Specifications

Model No	AM-DM2064-FMA2
Camera Specification	
Sensor type	1/2.7" Progressive scan CMOS sensor
Lux Level(illumination)	Color 0.05 Lux, B/W 0.01Lux @(F1.2, AGC ON), 0Lux @ IR ON
Shutter speed control	Auto/Manual, 1/2s ~ 1/100,000s
Gain control(AGC)	Yes
Lens	4.0MM Fixed focus, 89° Coverage angle
ICR	Dual filter ICR
IR wave length	850 ~ 880nm infrared
IR distance	up to 50mtrs., Smart IR control
On Screen Display	
WDR	120dB, Auto/Manual adjustable
Day/Night	Auto(Outside/Inside), Color, B/W
Digital noise reduction	3DNR (Close/Ordinary/Expert)
Light compensation	BLC Off/On, 1 Area, Customize design, HLC Off/On adjustable
White balance	Auto/Manual/Lock/Nature/Sunshine/Day Light/Warm Light
Other functions	Smart Defog control, EIS(Image Stabilizer), Flip control, Privacy masking
Motion detection	Yes, Zones :396(22x18), Sensitivity level 1~ 100
Image control	Brightness, Contrast, Sharpness, Saturation
OSD display	16×16,32×32,24×24,48×48,64×64 Character size 5 area arrangement @ Time/Date/Week/Character/PTZ angle
Compression/Video/Audio	
Video compression	H.265+, H.265, H.264, MJPEG, H.264 Main/High/Baseline profile
Video resolution	2MP(1920x1080)/1.3MP/1MP/D1/2CIF/CIF/VGA
Main stream	1080P(1920x1080)/960P(1280x960)/720P(1280x720)/D1(704x576)
Second stream	D1(704*576)/2CIF(704x288)/CIF(352x288)/QCIF(172x144)
Third stream	CIF(352x288)/QCIF(172x144)
Record & Live frame rate	Selectable 1 ~ 25/30(N) fps
Bit Rate	32Kbps ~ 8Mbps, VBR/CBR, I-Frame interval
Audio compression & bitrate	G.711/G.726/ADPCM & 8K~48Kbps
Video Analysis	
Intelligent video analysis	Crowd detection/Tripwire/Double tripwire/Perimeter/Missing and Foreign object/Fast Moving/ Loitering/Parking/Blur image/Scene change/Audio & Video abnormal detection
Perimeter detection mode	Intrusion, Enter, Exit
Intelligent alarm	Motion detection/Video loss/Video blind/Port alarm/IP & MAC conflict detection
Alarm & IVA trigger	On-screen alerts/PTZ trigger/Link out/E-MAIL/FTP upload/Pre-Post record
Corridor control	Yes(supported format 16:9, 9:16)
Region of Interest(ROI)	4 Area
Software Support	
Onvif	Yes, Profile S
CMS software	iCRYS Series, up to 256CH(IP+NVR+Matrix)
3rd Party VMS/NVR /CMS	Onvif/SDK
Mobile	Android /iOS through NVR, Cloud support
User login	8 User / 4 level of rights, Simultaneous login <7 User client
Snap shots	Schedule, Link with FTP or Email
Encryption	Off/AES

Technical Specifications

Model No.	AM-DM2064-FMA2
Network, Storage, Interface	
Protocol	TCP/UDP/HTTP/802.1x/FTP/SMTP/UPnP/Multicast/DNS/DDNS/NTP/RTSP/DHCP/PPPoE
Pre & Post recording	Pre : 5 to 15sec, Post : 10 to 60 sec
Storage function	ANR(auto download in NVR), Manual & Alarm recording
Network storage	FTP(pre & post upload)
LAN port	1x Port RJ-45, 10M/100M ethernet
Storage	Micro SD/SDHC/SDXC slot(128Gb)
General	
Power supply	DC 12V ±15% & PoE (802.3af)
Power consumption	<3W @ IR off, <7W @ IR on
Voltage protection	TVS 6000V, Lightning/Surge 2000V(power) 1000V(RJ45)
Reset switch	Yes
IP & Vandal protection	IP67
Operating temp. & humidity	-30°C ~ 60°C & 0% ~ 95% RH
Enclosure	Metal housing, Built-in 3 axis bracket
Weight (g) & Dimension	<0.7Kg camera, 190mm(L) X 70mm(W) X 70mm(H)

Dimension :

