



IP Camera AM-UM2060-MMR5-FS H.265+ 0.0004lux 2MP Two-Way Motorized IP Bullet Camera



DARK WARRIOR
STAR LIGHT

Dark Warrior Starlight Series IP Camera

Designed to work under Ultra Low Light illumination to Give Color Picture Quality

Superior Engineering Design & Sensational Image Quality

AM-UM2060-MMR5-FS H.265+ 0.0004lux 2MP Two-Way Motorized IP Bullet Camera



VIDEO ANALYTICS



H.265 VIDEO COMPRESSION



SUPER WDR



REGION OF INTEREST



12VDC/
PoE 802.af



AUDIO INPUT OUTPUT



VOLTAGE PROTECTION



Local Storage



ALARM IN



IP67 Waterproof

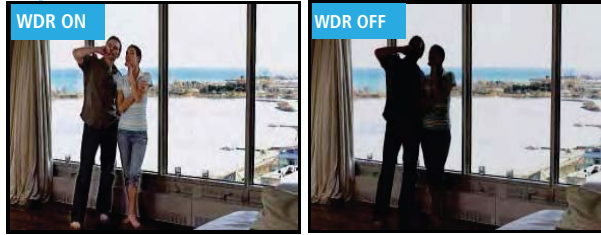
Features :

- Full HD 2MP Resolution 1920 x 1080P at 30fps, 60fps at 720P
- 1/2.8" Ultra low lux progressive scan CMOS sensor
- Latest H.265+ HEVC hardware compression along with H.264/MJPEG
- Two-Way intercom built-in Speaker and Microphone from the control room/NVR/mobile APP
- Ultra low lux color image at 0.0004Lux
- Motorized 2.8 ~ 12.0MM auto focus & iris varifocal lens, Controlled remotely through IE/CMS/NVR
- Smart video analytics 18 IVA functions includes Face detection, People counting, Tripwire & Perimeter(Person & Vehicle separation)
- Supports P2P APP alert management & functions
- Supports 140dB WDR and 3DNR to night vision image enhancement
- Triple streaming, Triple compression, Variable/Constant bitrate and frame rate
- Supports offline storage by microSD card 128gb(card optional) and Network storage(FTP)
- ANR(automatic network replenishment) to support offline network storage data(SD Card/USB) videos automatically download to NVR hard drive when network re-established
- ROI(region of interest) technology can save more than 25% of bit rate so it increases the storage period
- High intensity ExIR LED up to 80Mtrs. night vision, TDN by dual filter(ICR)
- Smart IR function works when object/person is close to camera. It controls IR to get clear picture
- 1CH audio input,output, Third party alarm Integration by 2Ch Input /1Ch Output
- Software compatibility with icrys series 256Ch CMS software and any third party Onvif VMS/CMS Software
- P2P secure cloud monitoring on iOS/Android handsets(through NVR live/playback/audio and control)
- Built in uni/multicast streaming to support multiple user logging at same time
- Wide range network protocol TCP/UDP/QoS/FTP/SMTP/upnp/RTSP/RTP/HTTP & many more
- Various functions such as as WDR, Day&Night, BLC/HLC, AGC, White balance, Shutter speed, In/Outdoor, etc.
- OSD in multiple color, naming & position, Privacy, Motion detection
- Latest ONVIF S profile compliance, Email notification, Manual & Schedule snapshot
- Easy, fast response & friendly graphical user interface, Advanced encryption secure access
- Redundant power supported by 12VDC & PoE(power over ethernet) with 802.3af standard
- Built-in TVS up to 6000V and Lightning/Surge protection power(2KV) and RJ45(1KV)
- Weatherproof IP67 supported enclosure, Wall/Ceiling mountable, included 3 Axis bracket

Darkwarrior Starlight IP Camera Night Vision



Super WDR



Remote Focus Motorized Control Lens



Remote Auto Focus Controlling Motorized lens technology and auto sets the focus & iris position for better picture quality in all focusing points and conditions.

Intelligent Video Analytics :

Virtual Fence



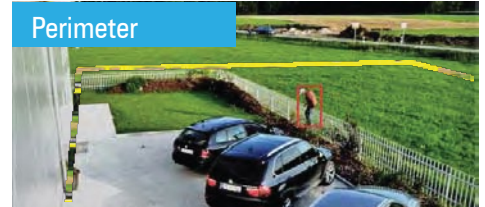
With a virtual fence set alongside a railway track, freeway hard shoulder, building perimeter or around a temporarily parked asset for example, an alert is generated when that fence is breached. Since the system "understands" direction, alarm discrimination based on direction of approach is made possible.

Double Trip Wire



The application detects moving objects that cross a two trip line, making it possible to automatically trigger an event. Ideal for illegal turn or traffic flow (vehicles or people) and specify the minimum to maximum time intervals or when the person or an object enters in unauthorized zone and crosses, the both virtual lines trigger an event.

Perimeter



The application detect direction of movement can be defined in any direction of the zone movement or moving into zone or moving out to zone. Ideal for Security Zone, Restricted area, Valuable item Storage Area & Many More.

Foreign Object



Missing Object



Foreign: The application Detects object abandoned/left behind/ Suspicious Objects Left in Pre-defined Area. It triggers an event. Ideal for Public Transports, Museums, Art Galleries & Public Places
Missing : The application detects when a particular object was moved or removed from the desired drawn Virtual area, it trigger an event. Ideal for Museums, Warehouse, Art Gallery, Jewelry showroom.

Crowd



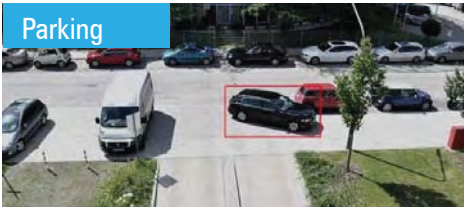
The application estimates the density of people in pre-defined area, once the density crosses a certain limits or suddenly group of a people enter into in the pre-defined area, it triggers an event. Ideal for Retailers, Shopping Malls, Waiting Areas, Hospitals, Parking Zones, Silent Zones.

Loitering



If somebody enters the marked area and stays there for a certain period of time, the alarm is automatically triggered. Ideal for Public areas, Border Fences, Buildings, Government Restricted Zone, Banks, Parking Areas.

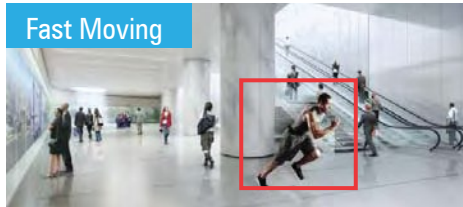
Parking



The application detects illegal parking with pre-defined restricted zones, speed limit settings.

Ideal for VIP parking Zone, No Parking Zone, Special Allocated Parking Zone, Parliament House.

Fast Moving



The application triggers an alarm when the person runs in a not allowing Running pre-defined Zone.

Ideal for Temple, Hallways lobbies, Platforms Walking Zone, Airports Runways.

Scene change



The application trigger an alarm if the camera Rotated/ Manipulation / Direction Shifted from the user-selected Viewing direction or camera lens is covered by some bag or cloths, Spray Painting, Video Tamper.

More than **10 IVA Functions** are available

Technical Specifications

Model No	AM-UM2060-MMR5-FS
Camera Specification	
Sensor type	1/2.8" Ultra low lux CMOS sensor
Lux Level(illumination)	Color 0.0004Lux, B/W 0.0001Lux @(F1.2, AGC ON), 0Lux @ IR On
Shutter speed control	Auto/Manual, 1/2s ~ 1/100,000s
Gain control(AGC)	Yes
Lens	2.8 ~ 12MM motorized lens, 36.5° ~ 95.7°
Focus control	Auto focus, One-key, Manual, Auto IRIS
ICR	Dual filter ICR
IR distance	up to 80mtrs., Smart IR control, IR LED power adjustable
On Screen Display	
WDR	140dB, Auto/Manual adjustable
Day/Night	Auto(Outside/Inside), Color, B/W
Digital noise reduction	3DNR (Close/Ordinary/Expert)
Light compensation	BLC Off/On, 1 Area, Customize design, HLC Off/On adjustable
White balance	Auto/Manual/Lock/Nature/Sunshine/Day Light/Warm Light
Other functions	Smart Defog control, EIS(Image Stabilizer), Flip control, Privacy masking
Motion detection	Yes, Zones :396(22x18), Sensitivity level 1~ 100
Image control	Brightness, Contrast, Sharpness, Saturation
OSD display	Yes, Character size, Display arrangement, Color
Compression/Video/Audio	
Video compression	H.265+, H.265, H.264, MJPEG, H.264 Main/High/Baseline profile
Video resolution	2MP(1920x1080P)/1.3MP/1MP/D1/2CIF/CIF/VGA
Main stream	1080P(1920x1080)/960P(1280x960)/720P(1280x720)/D1(704x576)
Second stream	D1(704*576)/2CIF(704x288)/CIF(352x288)/QCIF(172x144)
Third stream	CIF(352x288)/QCIF(172x144)
Record & Live frame rate	25/30(N)fps at 2MP/1.3MP/1MP, 50/60(N)fps at 720P, second stream @25fps
Bit Rate	32Kbps ~ 16Mbps, VBR/CBR, I-Fr. interval
Audio compression & bitrate	G.711/G.726/ADPCM & 8K~48Kbps
Video Analysis	
Intelligent video analysis	Crowd detection/Tripwire/Double tripwire/Perimeter/Missing and Foreign object/Fast Moving/Loitering/Parking/Blur image/Scene change/Audio & Video abnormal detection/People counting/Face detection
Intelligent alarm	Motion detection/Video loss/Video blind/Port alarm/IP & MAC conflict detection
Alarm & IVA trigger	On-screen alerts/PTZ trigger/Link out/E-MAIL/FTP upload/Pre-Post record
Corridor control	Yes(supported format 16:9, 9:16)
Region of Interest(ROI)	4 Area
Advanced warning	Camera send early warning alert
Network, Storage, Interface	
Protocol	TCP,UDP,HTTP,802.1x,FTP,SMTP,UPnP,Multicast,DNS,DDNS,NTP,RTSP,DHCP,PPPoE,SNMP,QoS,IGMP
Pre & Post recording	Pre : 5 to 15sec, Post : 10 to 60 sec
Storage function	ANR(auto download in NVR), Manual & Alarm recording
Network storage	FTP(pre & post upload)
LAN port	1x Port RJ-45, 10M/100M ethernet
Storage	Micro SD/SDHC/SDXC slot(256Gb)
Two-Way Intercom	Built-in MIC, Built-in Speaker
Audio	1Ch in, 1Ch out
Alarm	2Ch in, 1Ch out
Other ports	RS-485, USB2.0

Technical Specifications

Model No.	AM-UM2060-MMR5-FS
Software Support	
Onvif	Yes, Profile S
CMS software	iCRY Series, up to 256CH(IP+NVR+Matrix)
3rd Party VMS/NVR /CMS	Onvif/SDK/CGI
Mobile	Android /iOS through NVR, P2P cloud support
User login	8 User / 4 level of rights, Simultaneous login <7 User client
Snap shots	Schedule, Link with FTP or Email
Encryption	Off/AES
General	
Power supply	DC 12V & PoE (802.3af)
Power consumption	<5W @ IR Off, <10W @ IR On, ICR switching @ 12W
Voltage protection	TVS 6000V, Lightning/Surge 2000V(power) 1000V(RJ45)
Language	English, Spanish, Korean, Italian, Turkish, Thai, Russian, Polish, French
IP & Vandal protection	IP67, IK10 graded enclosure(excluding glass)
Reset switch	Yes
Operating temp. & humidity	-30°C ~ 60°C & 0% ~ 95% RH
Enclosure	Metal housing, Built-in 3 axis bracket
Weight (g) & Dimension	<1.5Kg camera, 265mm(L) X 95mm(W) X 85mm(H), Ø 105mm(D)

Diemention:-

