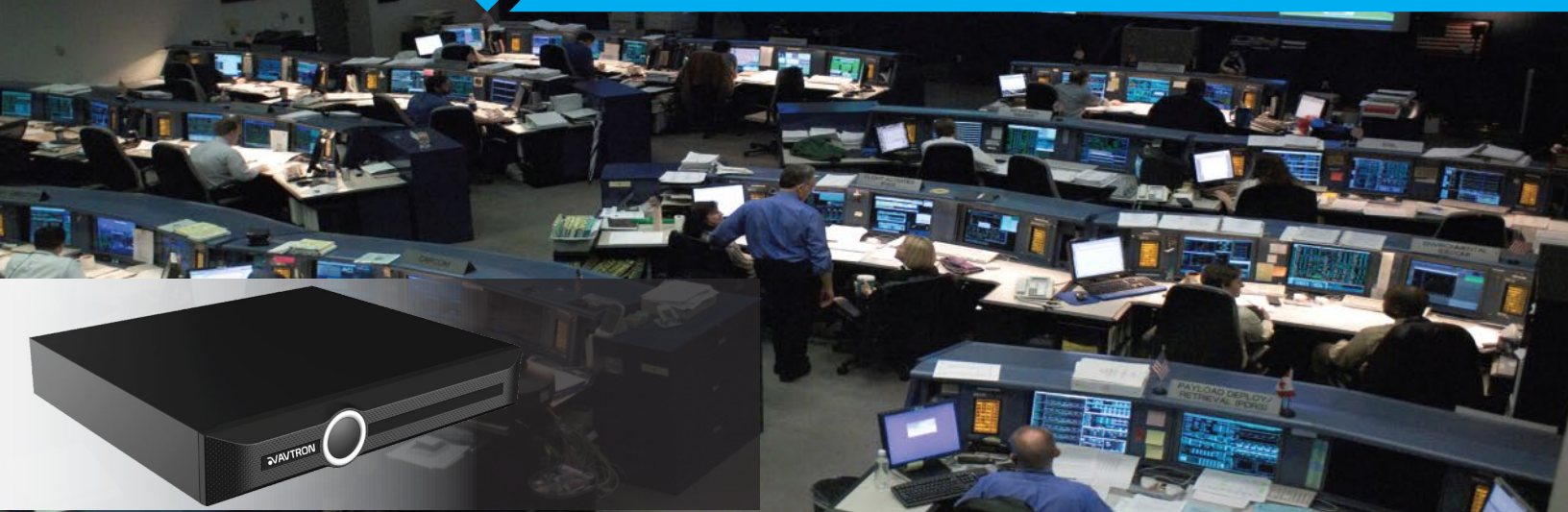




## Compact NVR AM-S110-UHD 10CH H.265+ Stand Alone NVR



Superior Engineering Design & Sensational Image Quality

### AM-S110-UHD 10CH H.265+ Stand Alone NVR



H.265+ VIDEO COMPRESSION



HDMI



VGA



VIDEO ANALYTICS



ANR



SMART RECORD & PLAYBACK



AUDIO IN/OUT



P2P CLOUD

### Features :

- Latest H.265+ HEVC Hardware compression with built In Video Intelligent Analysis
- Supports 5MP/4MP/3MP/1080P/720P/4CIF IP Camera Input
- 10Ch Real-time display on Single screen
- Up to 10TB storage capacity
- All 10Ch iVA video analysis(AVTRON iCRYST Series)
- Supports ANR Function, I-Frame Recording, Smart Record and Smart Search, Record file tag, Recording Encryption
- HDMI & VGA resolution up to 1080P Video output
- 256Ch CMS Software, Supports up to 150CH Viewing at single Screen others 100CH/80CH/64CH/49CH/36CH/25CH/16CH & many more
- P2P secure cloud monitoring on iOS,IPAD,Android handsets, Alert management
- Configuration Setting Control via Locally & Remotely by IE or CMS
- Network protocol TCP/UDP/MULTICAST/DDNS & many more IP Protocol, Auto Search with iCRYST Series Camera
- Supports Email, FTP, Recording, PTZ movement, Tour, Alarm, Buzzer, when Motion, Video Loss, Video Blind, etc.
- Back UP Through USB Flash drive/HDD/CD&DVD-RW/SATA Burner/Network download
- Quick Playback & Back up, Customized GUI Display, Complete PTZ Control(Preset, Cruise, Pattern & many more)
- Lowest Power Consumption, Compact Metal enclosure

## Intelligent Video Analytic Functions :

### Double Trip Wire



The application detects moving objects that cross a two trip line, making it possible to automatically trigger an event. Ideal for illegal turn or traffic flow (vehicles or people) and specify the minimum to maximum time intervals or when the person or an object enters in unauthorized zone and crosses, the both virtual lines trigger an event.

### Facial Detection



The application is able to identify and capture human faces from live video & it can save the images to the specified Recording Path either in NVR or CMS or Local Computer with Date & Time Stamp. Ideal for ATM windows, Service and Ticket Counters, Retail POS counters, Doorways and Passageways, Lobby and Reception areas.

### People Counting



The application sense people from an overhead position in the desired areas, how many persons Enter & Exit passing through. Functional to maintain Visitor Data, supervise stock point, evaluate traffic in key areas & manage the traffic flows. Ideal for Customer Service Centers, Airports, Changing Rooms, Point-of-Sale (POS) transactions Desk.

### Foreign Object



**Foreign:** The application Detects object abandoned/left behind/ Suspicious Objects Left in Pre-defined Area. It triggers an event. Ideal for Public Transports, Museums, Art Galleries & Public Places  
**Missing :** The application detects when a particular object was moved or removed from the desired drawn Virtual area, it trigger an event. Ideal for Museums, Warehouse, Art Gallery, Jewelry showroom.

### Missing Object

### Crowd



The application estimates the density of people in pre-defined area, once the density crosses a certain limits or suddenly group of a people enter into in the pre-defined area, it triggers an event. Ideal for Retailers, Shopping Malls, Waiting Areas, Hospitals, Parking Zones, Silent Zones.

### Loitering



If somebody enters the marked area and stays there for a certain period of time, the alarm is automatically triggered. Ideal for Public areas, Border Fences, Buildings, Government Restricted Zone, Banks, Parking Areas.

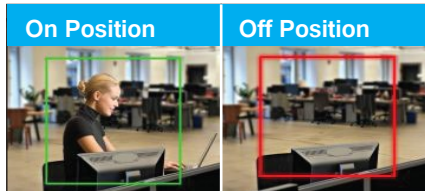
### Parking



The application detects illegal parking with pre-defined restricted zones, speed limit settings.

Ideal for VIP parking Zone, No Parking Zone, Special Allocated Parking Zone, Parliament House.

### On Position

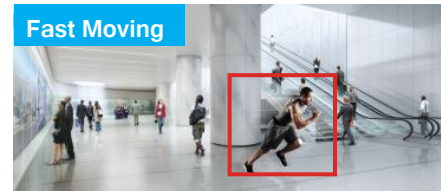


The application triggers an alarm when the Duty Officers are absence from their pre-defined sitting positions.

Ideal for Reception, Customer Service Desk, POS Desk, Entry/Exits Security Guards Cabin.

### Off Position

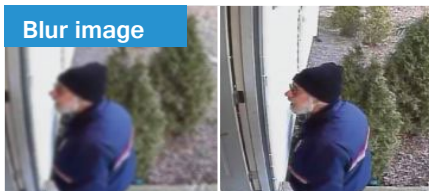
### Fast Moving



The application triggers an alarm when the person runs in a not allowing Running pre-defined Zone.

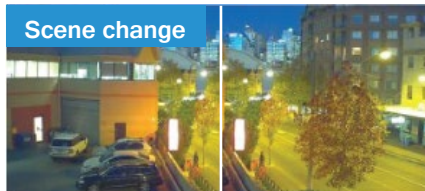
Ideal for Temple, Hallways lobbies, Platforms Walking Zone, Airports Runways.

### Blur image



The application trigger an alarm if someone deliberately or accidentally disturbed the lens focus or change the image Sharpness.

### Scene change



The application trigger an alarm if the camera Rotated/Manipulation/Direction Shifted from the user-selected Viewing direction or camera lens is covered by some bag or cloths, Spray Painting, Video Tamper.

More than  
**18 IVA Functions**  
are available

## Technical Specifications

| Model No                               | AM-S110-UHD  |
|--|--|
| <b>System</b>                          |  |
| Video Compression                      | H.265+ HEVC, H.264 Hardware Compression  |
| Audio Compression                      | ADPCM-DV14/G.711A/G.711U   |
| Operation System                       | Embedded Linux   |
| Signal System                          | Auto Detect  |
| Bandwidth Throughput                   | 80Mbps(Incoming 40Mbps)  |
| Remote connections                     | 64Channels   |
| <b>Record/Playback/Streaming</b>       |  |
| IPC input                              | 10Ch @5MP/4MP/3MP/2MP/720P/4CIF  |
| Live Screen window                     | 10CH/9CH/8CH/6CH/4CH/1CH   |
| Live Display channel                   | 10CH @4CIF, 4CH at 1080P, 1CH@5MP Realtime display   |
| Record resolution                      | 5MP/4MP/3MP/1080P/UXGA/720P/VGA/4CIF/DCIF/2CIF/CIF/QCIF  |
| Record frame rate                      | Mainstream 25fps(P)/30fps(N), Sub stream 25fps(P)/30fps(N)   |
| Record function                        | Smart Record, Records Encryption, Records TAG, One Key Start Recording, Trigger Recording  |
| Smart record                           | Different recording bitrate at different time zone, i-Frame recording only record key frame to lower frame rate  |
| Trigger record                         | Manual/Timing/Motion Detection/Port Alarm/ IVA Alarm/Video Occlusion   |
| Playback channel                       | 4CH @720P/D1, 2CH @1080P   |
| Smart search                           | YES, Quickly search target iVA videos , Only for iCrys series cameras  |
| Playback function                      | Play, Pause, Stop, Rewind, Fast, Slow, Next & Previous File/Camera, Full screen, Repeat, Shuffle, Backup selection, Digital Zoom   |
| Instant Access Function                | Quick playback up to last 5min, Quick backup   |
| Record quality                         | Best/Better/Good/Normal/Worst  |
| Record stream Bitrate                  | VBR/CBR (32 ~ 16384Kb/s)   |
| Sub stream                             | D1/CIF/QCIF, Frame rate selectable   |
| Pre & Post alarm record                | Pre : 10 ~ 600 sec, Post : 5 ~ 60sec   |
| <b>Storage</b>                         |  |
| Hard disk Interface                    | 1HDD (SATA Port)   |
| Hard disk Capacity                     | Max. up to 10TBEach Port   |
| ANR                                    | Download Stored Video Automatically from Camera SD Card, When NVR Online   |
| <b>Intelligent Analytics Functions</b> |  |
| Video analytics channel                | All Channel Tripwire/Double tripwire/intelligent tracking/Heat map/Object left and lost/Running/Loitering /Parking/Early warning/Crowd/Face detection/People counting/Perimeter/Audio and Video abnormal detection/On duty Detection |
| Video diagnosis                        | Video color cast detection, Noise Detection, Electromagnetic interference testing, Fuzzy video Detection   |
| Motion detection                       | Yes, Zones :396(22x18), Sensitivity Level 1~ 100   |
| Video loss/blind alarm                 | Yes  |
| Hdd alarm trigger                      | Disk Full, No Disk, Disk R/W Error, Redundancy Error   |
| Network alarm trigger                  | illegal Access, IP Address Conflict, Network Lost, MAC Conflict  |
| Icrys Series camera Function           | Corridor Control, Plug & Play, Image Flip, one key control,  |
| Event trigger out                      | E-MAIL, Snap, NVR Sound Buzzer, OSD, Alarm Server Devices, Video Recording, Alarm Out, PTZ Trigger   |

## Technical Specifications

| Model No.                    | AM-S110-UHD  |
|------------------------------|--|
| <b>Video/Audio/Interface</b> |  |
| HDMI output                  | 1920x1080,1280x720,1280x800,1366x768,800x600,1024x768,1440x900 Adjustable Output, Self-detection                               |
| VGA output                   | 1920x1080,1280x720,1280x800,1366x768, 800x600,1024x768,1440x900 Adjustable Output, Self-detection                              |
| Network                      | RJ45 Port 10/100MBPS   |
| Audio                        | 1Ch output   |
| USB                          | 2x USB2.0  |
| Network protocol             | TCP/UDP/MULTICAST/UPNP/HTTP/DHCP/PPPoE/DDNS/NTP/ HTTPS/NFS/FTP/RTSP/SMTP/HTTPS/SADP, Alarm Server, Auto Search iCRYSTAL Series |
| Backup                       | Flash drive/USB HDD/ USB CD&DVD-RW/Network download  |
| Snap shot                    | Schedule, Link with FTP or Email   |
| OSD setup                    | Channel Wise Color/Position/Transparency/Text/Masking/Date & Time Format   |
| Usage display                | Remaining Bandwidth Display, Flow Monitor, Capture Package   |
| Log generation               | Channel, Event based, Date and Time selection, Export  |
| <b>Software Supports</b>     |  |
| Onvif compliant              | Yes, Profile S   |
| Key function                 | One key record, One key intercom, Digital zooming  |
| P2P cloud                    | I-Phone, IPAD, Android, Record, Playback, Push Notification, Device controls   |
| Web browser                  | IE, Safari, Chrome, Edge   |
| Other functions              | E-MAIL Alert, FTP upload   |
| <b>General</b>               |  |
| Language                     | English  |
| Power supply                 | DC12V 3A   |
| Power consumption            | <10W without HDD   |
| Operation conditions         | -10°C ~ +55°C (+14 F ~ + 131 F), 10% ~ 90% RH  |
| Enclosure                    | 1U, Black color, Metal case  |
| Weight (g) & Dimension       | <1Kg, 255(D) x 235(W) x 45mm(H)  |

**Dimension :**

